



**THE
WAREHOUSE**
INSPIRE . EQUIP . CONNECT



FY2023 **ANNUAL** REPORT.

www.warehouse.org.za

WELCOME

"Nothing truly lasting is built in haste. Nothing that truly matters is formed in minutes and hours, although each minute lived faithfully day after day, year after year is what truly transforms." from *The Song of the Tortoise*, Wendy Lewin

Dear friends,

We live in uncertain times. During the period covered by this report, the world saw the invasion of Ukraine by Russia. At the time of writing this report, we are living through the third month of Israel's unrelenting and indiscriminate war on Gaza in retaliation for Hamas' brutal attack on Israel on 7 October 2023 - an attack which most recognise as being related to the 16-year long blockade imposed on Gaza by Israel and the ongoing settler occupation and apartheid system imposed on Palestinian people by Israel. Our own continent continues to battle the ripple effects of colonialism and its neocolonial "successor institution"¹, the nation state, as well as climate change and global extractive economies: from continuing and extreme racially-stratified inequality in South Africa, to the mineral-fuelled conflicts in Democratic Republic of Congo, devastating post-war famine and drought in Tegray, Ethiopia, coup d'état's in Gabon, Mali, Guinea, Chad, Burkina Faso and Niger, and religious extremism in so many forms and locations.

These are only a few of the stories playing out on the geopolitical stage, all of which impinge on the day-to-day reality of those who share this planet, especially those most vulnerable to the ripple effects of interlinked and intersecting economies, ecologies, ethnicities and empathies.

In each of these places and all the other ones left unnamed, there are Jesus-followers who continue to bear faithful witnesses to the Good News of Jesus.

Across the world, there are daily acts of love and resistance to evil which are undertaken by those asking what love of neighbour looks like in their specific context, and by those discerning what saving and restorative work God is doing in the world that they can align to. It has been our deepest honour to come alongside even a small number of these individuals, local congregations and entities to collaborate with them in this work. As we have journeyed with these precious expressions of the loving and beloved community, we have continued to ask these questions of ourselves within our specific context: what is happening in our world that we need to pay attention to? What does it look like to be known by our love in the specific situations confronting us? What shape does solidarity with "the least of these" take? How is the Warehouse being reformed to serve the growing "Jesus and Justice movement" - not just right now, but building for sustained, intergenerational, system transformation over the next 100 years? What kind of chaplaincy is needed for those on the forefront of prophetic action?



¹ According to Davidson as cited by Emmanuel Katongole on page 68 in his book, *The Sacrifice of Africa: A political theology for Africa*. This "successor institution" continues to produce "realities like chaos, unrest, war, and corruption" which, Katongole argues, "are not indicators of a failed institution [but rather] are part and parcel of the way nation-state politics in Africa work".
² Ibid, Page 65.
³ As he wrote in the *Pastoral Circle or Circle of Praxis*, this tool was expounded on by Holland and Herrick in their book *Social Analysis: Linking faith and justice*.
⁴ See Holland and Herrick, Page 8.
⁵ Ibid, Page 7.
⁶ Ibid, Page 8.
⁷ These four questions map the questions of practical theology as developed by Richard Doerflinger.
⁸ WJCA - an acronym based on the leadership theories of Warren Bennis and Burt Nanus.

For those who continue to speak up for deep shalom and true justice despite the consequences? For those who continue to bear the brunt of injustices in our city and world? What does theological, leadership and humanising formation look like for those in the next generation of Jesus-followers? And what new stories, songs, visions and traditions are needed to nurture the loving and beloved community and the new world we are working towards?

In exploring these questions with each other, our wider community and God, we have been careful not to move too quickly to solutions, to avoid the temptation of what Emmanuel Katongole calls “prescriptive haste” where, “in the rush to come up with relevant recommendations, insufficient attention is paid to what is actually going on, particularly regarding the underlying stories that reproduce the realities of corruption, civil war, violence, and poverty throughout Africa’s [and the world’s] social history.”² In avoiding this temptation, in slowing down to ask

the questions which will unearth the deeper work we need to engage in that will lead to lasting transformation over the next 100 years, we have been so grateful for the gift of what we call the Praxis Cycle³. *Praxis* is the rhythmic and necessary flow between reflection and action, theory and its practical outworking, theology and incarnational living. The Praxis Cycle holds us in a continuous movement through 4 “moments” with key questions that help us move towards life-giving, lasting prophetic action:

Immersion: This first moment asks “What is happening?” and locates the “geography of our pastoral responses in the lived experiences of individuals and communities. What are people feeling? What are they undergoing? How are they responding?”⁴. It asks of us, “Where and with whom are we locating ourselves as we [ask these questions?] Whose experience is being considered?”⁵ Who bears the brunt of the injustices in our society and are their experiences being prioritised in our listening?

Social Analysis asks “Why is it happening?” and seeks to understand these experiences “in the richness of all their interrelationships”: examining causes, probing consequences, delineating linkages and identifying actors.⁶

In the third moment of **Theological Reflection**, we ask “What should be happening?”. In this moment we put all the preceding questions under the lens of living faith, Scripture and church teachings, traditions and resources to discern God’s heart and activity in these experiences, relationships, dynamics and contexts.

Pastoral Planning moves us into action with the question of, “How, then, shall we live?”⁷ - what should our response be? Who should be involved in designing and implementing the response? How will this be sustained: in vision, in resources and over the long-term?

These moments and questions are woven into our day-to-day rhythms as well as our collaboration with Jesus-followers around the city and country and have provided a rich framework from which we can create a shared understanding of the problems we are facing, gain insight into the ecosystem in which we are all participating through our differentiated, yet mutually reinforcing actions and practise solidarity, lament and celebration as we move through different seasons together.

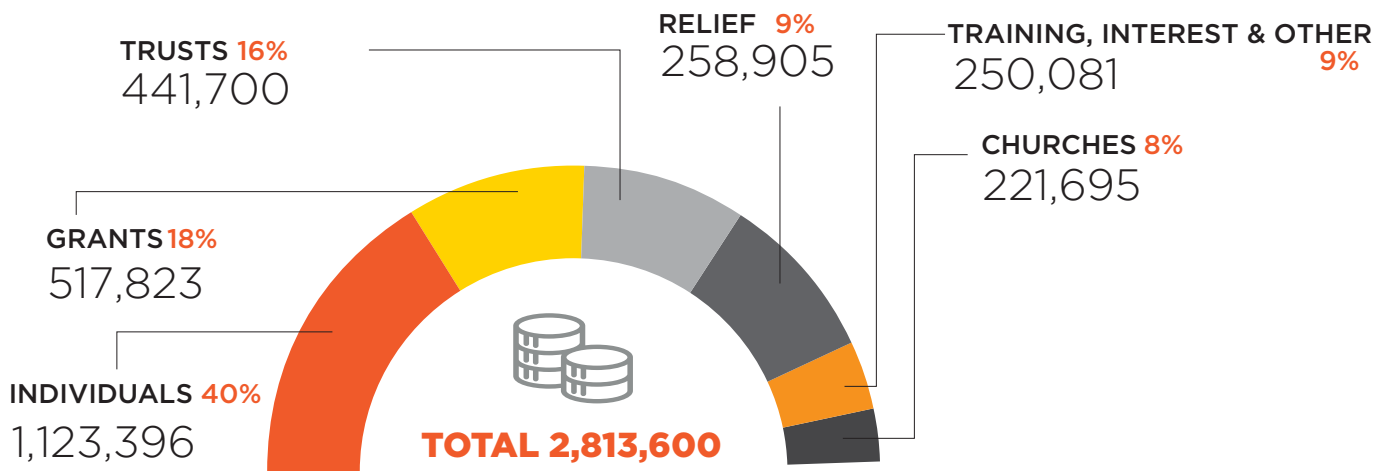
In these volatile, uncertain, complex and ambiguous times⁸, we pray for communities of belonging, where you can explore courageous and curious questions, be held in the vulnerability of unlearning, discern together what life in all its fullness looks like in your context, and move forward together in the power of the Holy Spirit to bring healing, restoration and flourishing: on earth as it is in Heaven.

With love from
The Warehouse Team



FINANCIAL YEAR 2023

ANNUAL INCOME



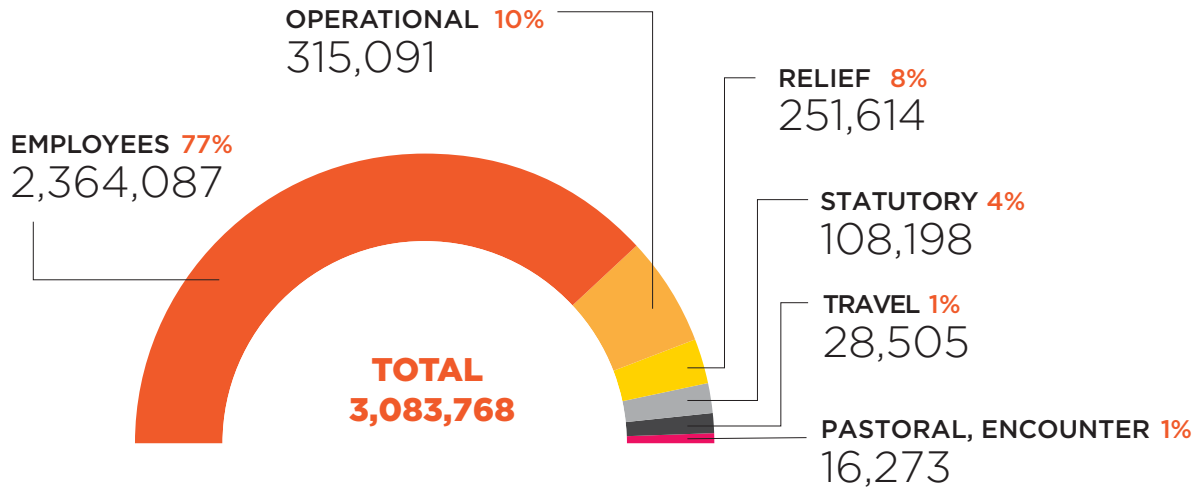
THREE YEAR VIEW (IN ZAR)

	2023	2022	2021
INCOME	2,813,600	4,664,609	9,946,548
EXPENSES	3,083,768	4,463,646	9,649,749
SURPLUS	-270,168	200,963	296,799

** Note: In the FY2021 financial year the Warehouse was involved in coordinating COVID-19 responses alongside the South African Council of Churches and the Western Cape Ecumenical Network.

By FY2023 all operational aspects had been handed over to Mthunzi Network NPC

ANNUAL EXPENSE



INDIVIDUAL DONATIONS*



DONORS
100



DONATIONS
798



R1525

AVERAGE
VALUE

* EXCLUDES RELIEF RESPONSE

ORGANISATIONAL DONATIONS



CHURCHES
6

GRANTS
4

TRUSTS
3

FINANCIAL FAQ

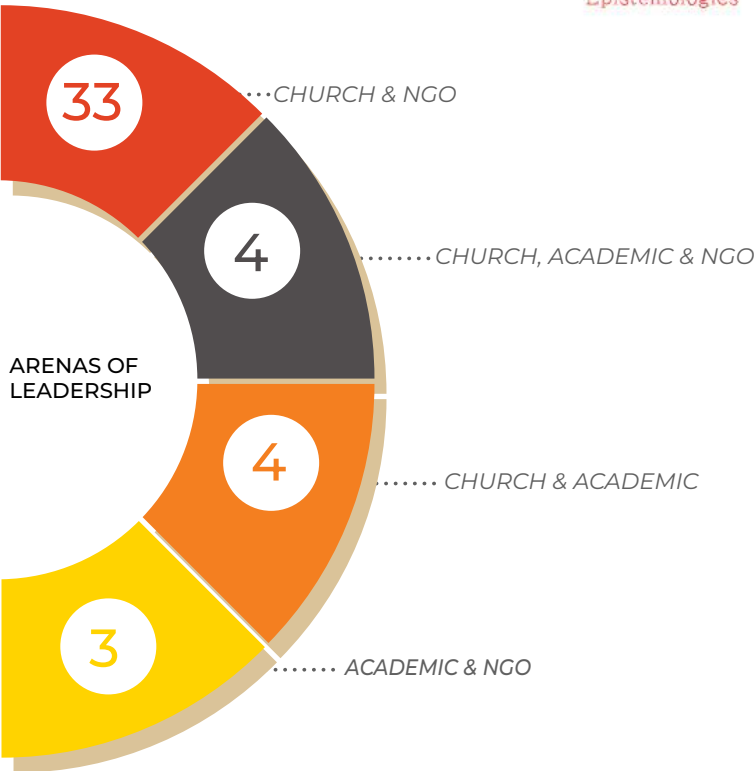
The Warehouse is a Section 18A Public Benefit Organisation registered with the South African Revenue Services, meaning that donations to The Warehouse are tax deductible.

The Warehouse is governed by a board of 8 trustees who meet triannually. Our annual audit was conducted by MGI Bass Gordon and signed by the board of trustees on 15/11/2023

STRATEGIC LEADERS

Formation and chaplaincy of leaders in churches, with a focus on younger leaders, women and those working in economically under-resourced communities.

377



PRIORITY GROUPS



49 Female in Low Economically Resourced Areas

51 Female under 35



114 Female in Low Economically Resourced Areas

72 Female under 35

LOCAL CONGREGATIONS

Catalysing and nurturing creative and innovative community initiatives and civil society participation by local church communities and networks.

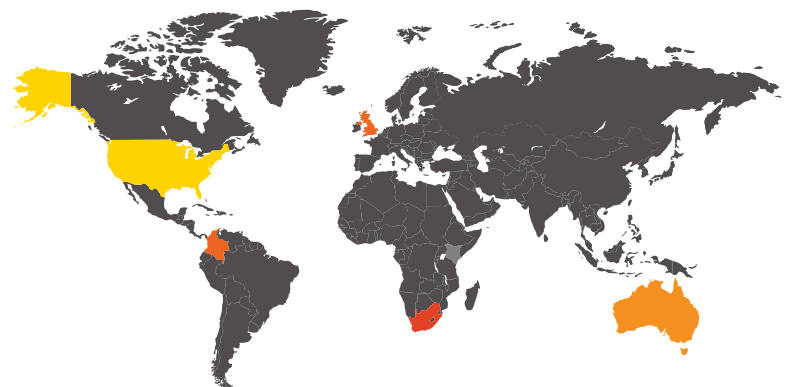
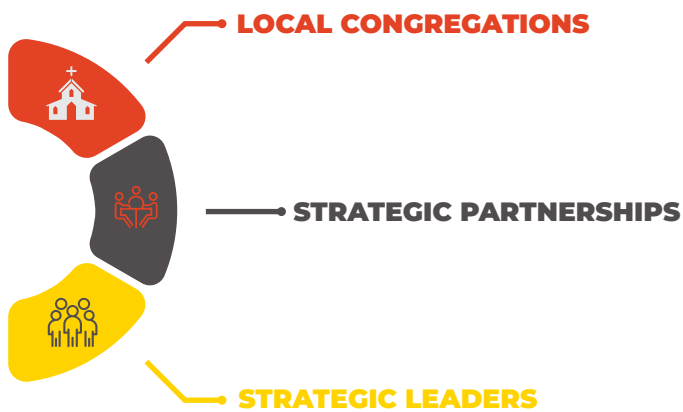
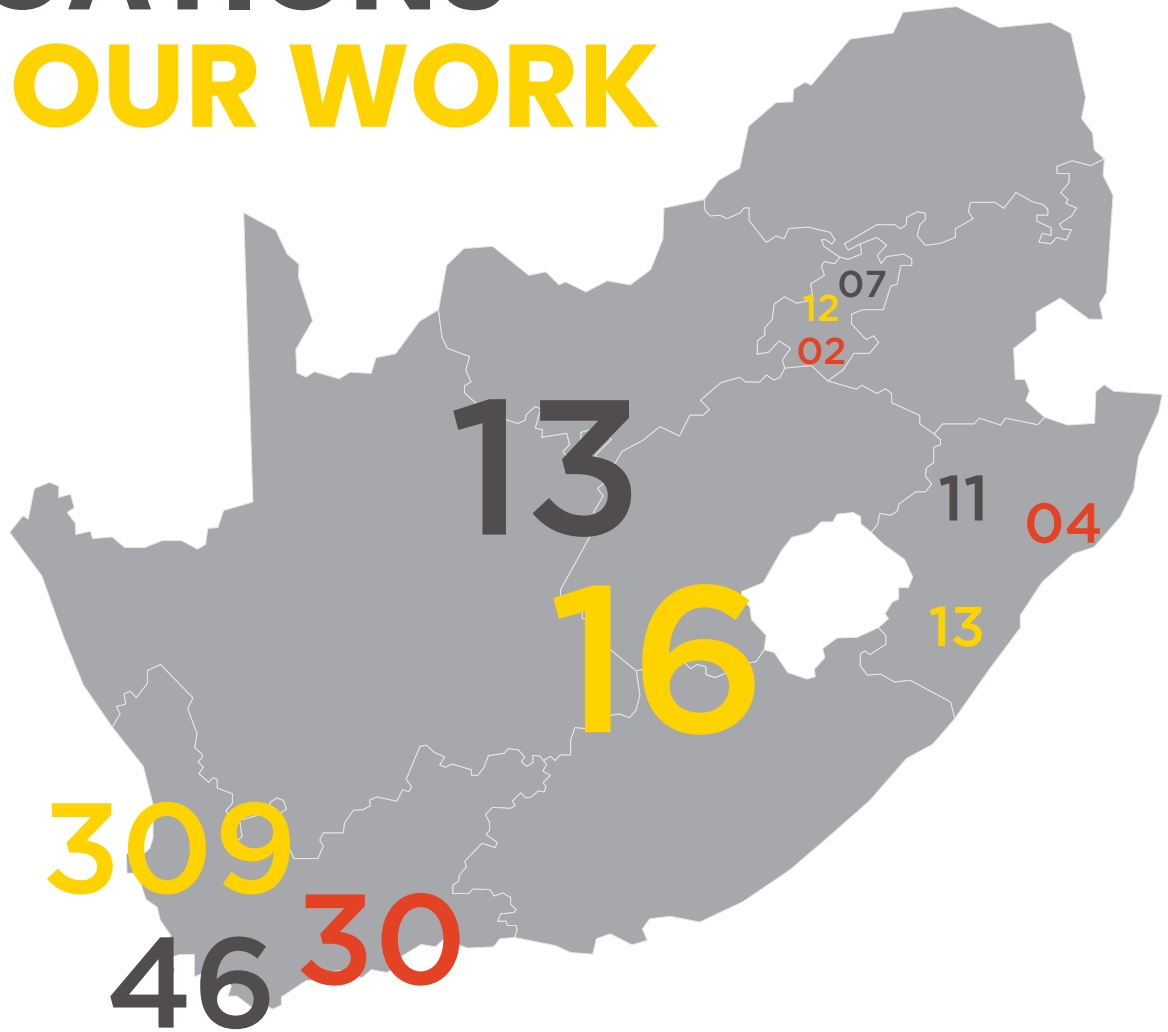


STRATEGIC PARTNERSHIPS

Creating and maintaining local and national networks of churches, FBOs and leaders that enable shared learning, collaborative action and collective impact in response to systemic issues.



LOCATIONS OF OUR WORK

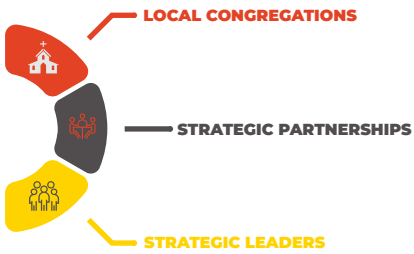
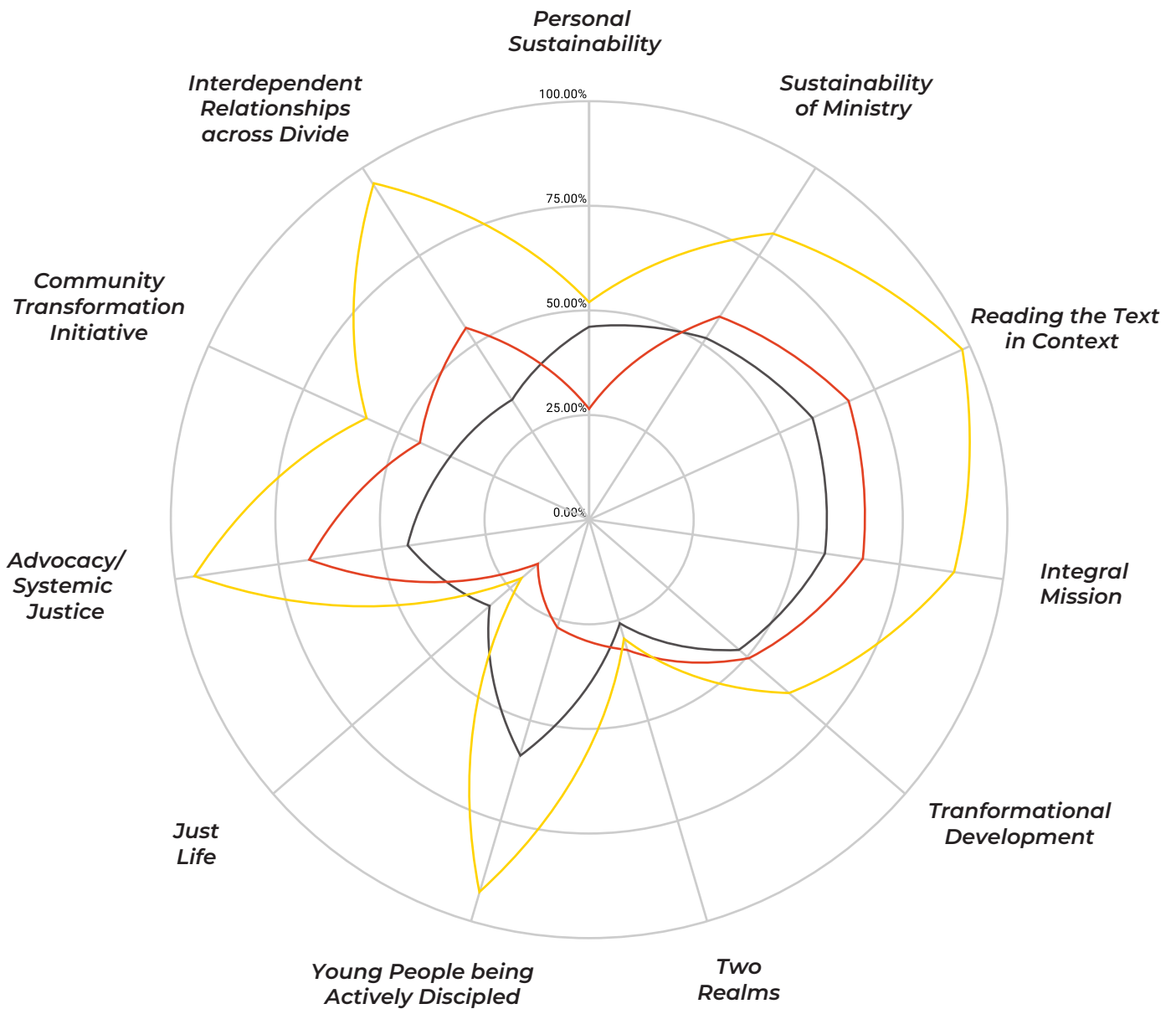


21 08
INTERNATIONAL

04 04
AFRICA

STRATEGIC OUTCOMES

We work to see the Church bearing witness to the good news of Jesus by actively living out the peace and justice of God for the world.



VISION

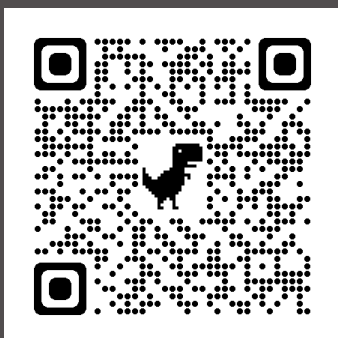
THE **CHURCH** ACTIVELY
LIVING OUT THE
PEACE AND JUSTICE
OF GOD FOR THE WORLD



**THE
WAREHOUSE**
INSPIRE . EQUIP . CONNECT

MISSION

WE **SUPPORT** LOCAL CHURCH
CONGREGATIONS ENABLING
DIALOGUE, FACILITATING
COLLABORATION AND
INSPIRING HOPE-FILLED
IMAGINATION TOWARDS
JUSTICE-SEEKING **ACTION** IN
THEIR **NEIGHBOURHOODS**
AND REGIONS.



P : +27 21 761 1168

E : info@warehouse.org.za

w : www.warehouse.org.za

X: [@warehousecptwn](https://twitter.com/warehousecptwn)

FB: TheWarehouseTrust

IG: [we_are_the_warehouse](https://www.instagram.com/we_are_the_warehouse)